



Pantoufle

Galleries share creative riches

PANTOUFLE

PANTOUFLE is proud to add Kenyan artist Muchiri Simons to their ever-expanding list of artisans, with the addition of three exquisite paintings by the internationally acclaimed artist. Titled 'The Long Song', 'Motherhood' and 'My Music', Simons' work is a documentation of his life from his point of view, incorporating past, present and future visions. Through this, his art represents the many puzzles of living, inviting viewers to solve and learn the meaning for themselves. Simons's story is one of meagre beginnings and extremely hard work driven by passion. Visit Pantoufle to see these works and be immediately swept away on a journey to places such as Morocco, France, Italy, India, Mauritius, Nepal and soon-to-come Turkey through their combination of staple items and one-off collectables. Visit shop 7, 20-38 Subiaco Square Road, Subiaco, call 9381 4260 or shop online at www.pantoufle.com.au.

JAPINGKA GALLERY

SANDHILL and Waterhole Country—Our Land was created at Wangkatjungka Community during March and April this year. Seven women artists worked on the canvas, painting aspects of their ancestral country in the Great Sandy Desert. All of these artists, now elders, grew up on their ancestral lands and were children or teenagers when their parents joined the great exodus of families out of the Western Desert areas along the Canning Stock Route. They have painted significant waterholes and hunting grounds which were part of their family inheritance when they walked and

hunted across this country with their extended kinship groups. The painting is 153 by 200 centimetres in size (the adjacent image is a detail). It is available at Japingka Gallery, 47 High Street, Fremantle. Call 9335 8265 or visit www.japingka.com.au.

GADFLY GALLERY

NEXT Wednesday marks an exciting day for collectors in the world of Aboriginal art, as Gadfly Gallery proudly launches its latest collection of works by eminent Aboriginal women from the Central Desert. Six collectable artists are gathered together, while the highlight for many will be the extraordinary work of elder artist Kathleen Petyarre (b. 1940).

As her most mature work yet, it celebrates a new Dreaming-story referencing the entire ecosystem in which 'Arnkerrth'—her totemic 'Mountain Devil' lizard—is situated. Her granddaughter Abie Loy Kemarre has painted some of the most beautiful Bush Leaf Dreaming paintings of her career, while being joined by Telstra Award 2010 Finalist Lily Lily Nungarrayi Jurrak Hargraves and other elders from the Lajumanu community, including Peggy Napanagrdi Jones. The exhibition opens Wednesday, June 16 from 6pm. Preview the works at www.gadflygallery.com or call 9386 8369 for more information.

GREENHILL GALLERIES

SQUARED is Greenhill Galleries' annual winter exhibition, providing new collectors with an opportunity to purchase affordable 40 by 40 centimetre works by numerous

renowned Australian artists. This fascinating and affordable show features small-scale works from esteemed artists like Robert Juniper, Jason Benjamin, Nigel Hewitt, Christine Johnson and Jasper Knight. This popular exhibition is consistently embraced by the community. The exhibition runs from Friday June 18 until Saturday July 3. Greenhill Galleries opens 10am to 5pm Tuesday to Friday and 10am to 4pm on Saturday at 6 Guger Street, Claremont. Call 9383 4433 or visit www.greenhillgalleries.com.

INTERACTIVE ARTS

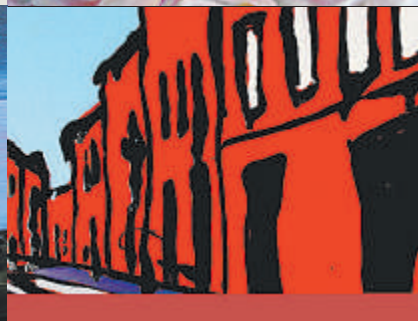
INTERACTIVE Arts a locally based online art gallery and their member artists are responding to the challenging economic climate with an inaugural online exhibition of small works. By submitting smaller works around the dimensions of 30 by 30 centimetres, Interactive Arts artists are able to accommodate the need for more affordable art. "During this time of the average household needing to tighten their budgets to cope with financial pressures, we at Interactive Arts believe there is a greater need to create special, personal spaces particularly at home," Interactive Arts Director Fleur Allen said. Artists featured are Carmen Cilliers, Shani Lee, Jan Purser, Malini Purser and Carolyn Rhodes-Thompson and more including multi award winning artist, Narelle Manser-Smith. The online exhibition of small works runs from now until June 30 or until the art is sold. Visit www.interactivearts.com.au or call on 9380 6539.



Japingka Gallery



Gadfly Gallery



Greenhill Galleries



Interactive Arts